

Montana

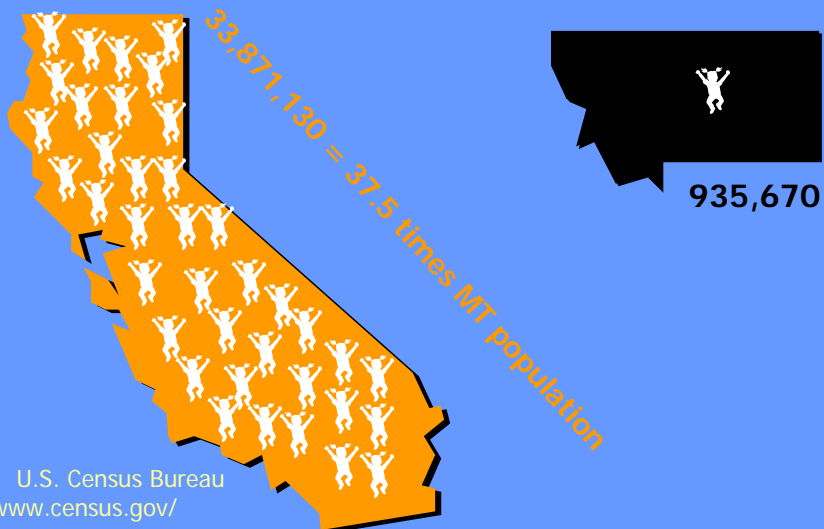
The Last Best Place



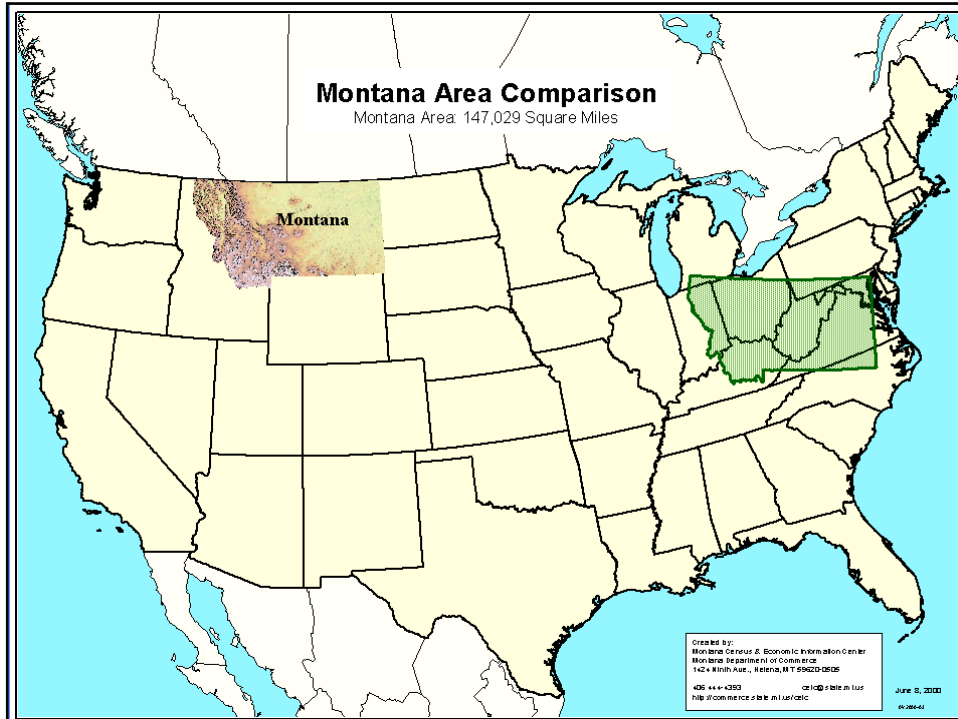
www.opi.mt.gov

1

2005 Estimated MT Population



Source: U.S. Census Bureau
<http://www.census.gov/>



430 School Districts 840 Schools

- 44 school districts have fewer than 10 students enrolled
- 101 school districts have between 10 and 50 students
- 144 school districts have between 50 and 200 students
- 80 School districts have between 200 and 499 students
- 61 school districts have more than 500 students enrolled



Springdale Elementary, Park County
4 Students and 1 Teacher

Montana Schools

Sylvanite Elementary

1 Students
1 Teacher
Lincoln County



Billings West High School

2,143 Students
127 School Employees
Yellowstone County



5

Ross Elementary, Garfield County



7 Students
1 Teacher
Garfield County

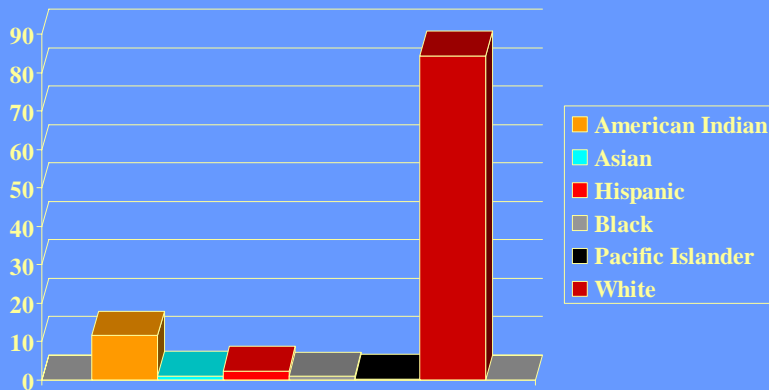
*One of the most remote schools
In the lower 48 states*



6

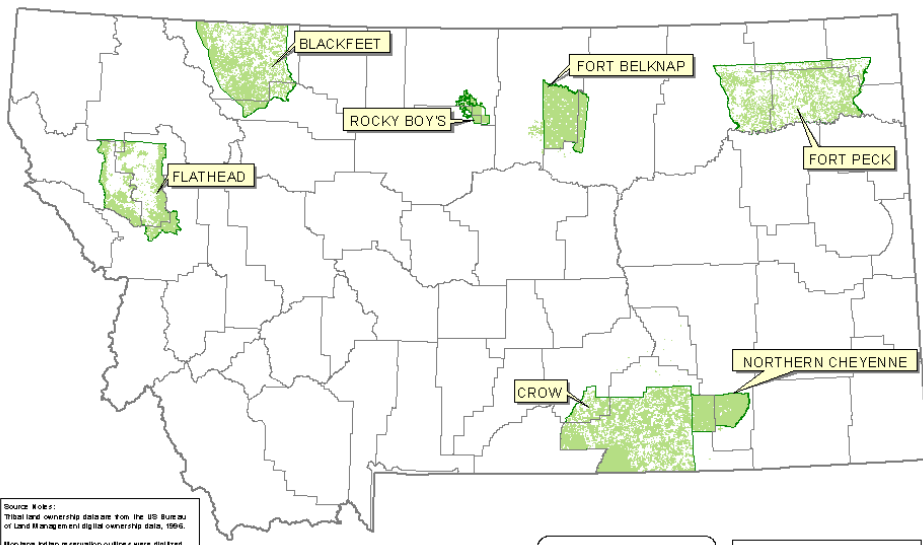
Race of MT Public School Students

Percent of Total Enrollment



7

Tribal Lands in Montana



Source Notes:
 Tribal land ownership data from the US Bureau of Land Management digital ownership data, 1995.
 Montana Indian reservation outlines were digitized from 1:250,000 scale GIS maps in the 1970s. The boundary of the Rocky Boy's Indian Reservation was derived digitized from 1:100,000 and 1:24,000 scale maps.
 Data were obtained from the Natural Resource Information System at the Montana State Library.

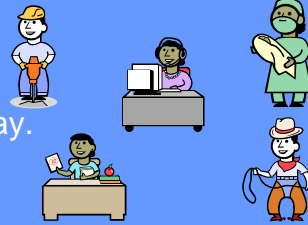
Tribal Lands in Montana
 [Green Outline] Reservation Outline
 [Green Fill] Tribal Lands

Created by:
 Montana Center for Economic Information Center
 Montana Department of Commerce
 142 N. 17th Ave., Helena, MT 59620-0606
 406 444-4393 or 1-800-988-1111
<http://commerce.state.mt.us/>

June 7, 2003

Montana Workers

The average Montana worker...
earns about \$28,000 per year
50th in the nation for average annual pay.



BUT....

In 1888, Helena, MT had more millionaires per capita
than any other city in the world



9

Montana Mountains

- Highest point in the state
 - Granite Peak
 - 12,799 feet



10

Montana Gold Rush

- Montana Gold Strike 1862
- Greatest rush to the West since the California Gold Rush of 1848
- Bannack, MT gold was 99-99.5% pure compared to most gold at 95%.



11

Montana Yogo Sapphire



- While not commonly known around the world, Montana produces some of the finest sapphires -- those from the famous *Yogo Mine*, in the central part of the state.
- Montana Yogo's are the only North American gem to be included in the Crown Jewels of England.
- Besides their beautiful color, described as "cornflower blue", they are the only currently mined sapphires in the world that are **natural and not heat-treated**. **Because of this, they are also among the most valuable!**

12

Montana Dinosaurs

- Nearly 50 different types dinosaur fossils have been found in Montana.
- Leonardo is a 77-million-year-old sub-adult *Brachylophosaurus canadensis*. He was discovered in Malta, MT and is the worlds first dinosaur in the flesh as his skeleton is covered in skin, scales, muscle, foot pads and even his last meal is in his stomach.



13

Museum of the Rockies

- The Museum of the Rockies in Bozeman gained fame through the work of its chief paleontologist, Jack Horner.
- Horner was the prototype for the character Dr. Alan Grant in Jurassic Park.
- The Museum is currently exhibiting the largest T-Rex skull in the world.

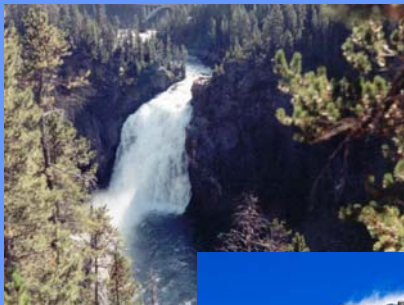
14

Montana Wildlife



- Largest migratory elk herd in the nation
- Elk, deer, and antelope populations outnumber humans
- No state has more mammal species than Montana.

15



16



- Montana holds the world record for the greatest temperature change in 24 hours.
- On January 14-15, 1972 in Loma, MT, the temperature went from -45 to 49F!



17